



## Hydraulic hoses

Hydraulic motor	Kit number	Item				
		Hose	Fitting	Hose ends		Seals
		½" Double Wire Braid	½" BSPP Male QRC	½" BSPP Male	7/8" UNO Male	½" Doughty Seal
Danfoss	9916	2m	1	2	0	2
Parker	9911			1	1	1

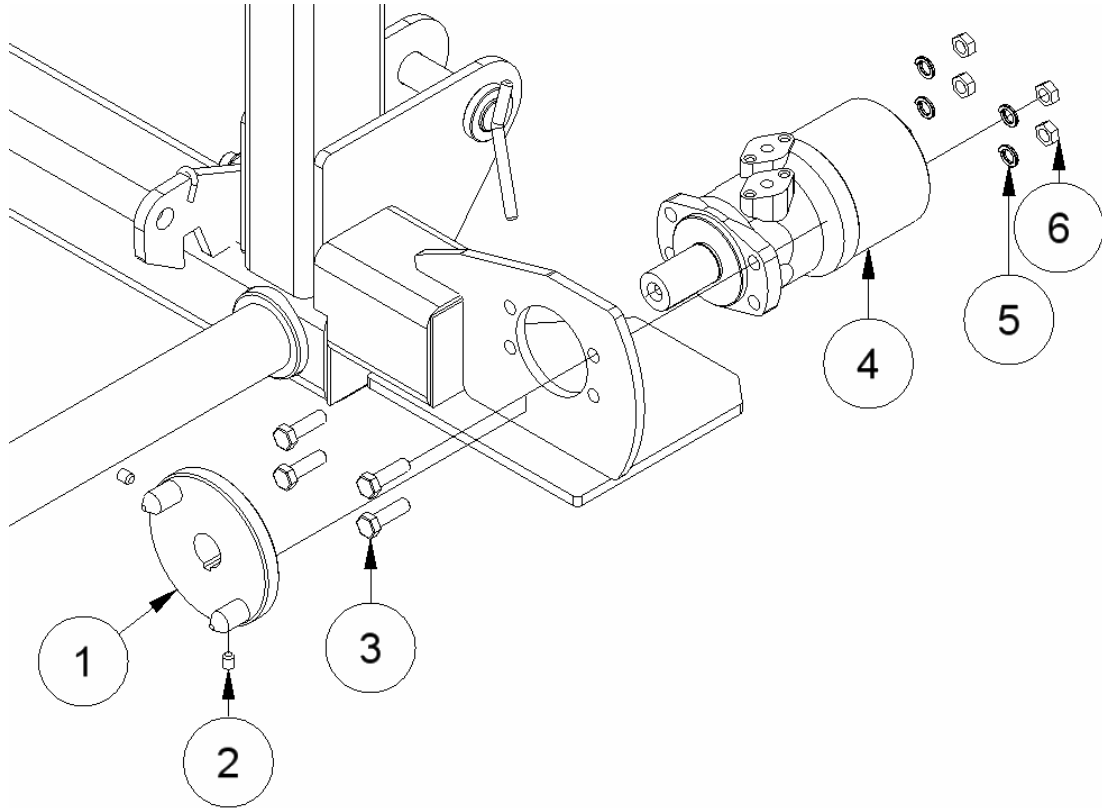
## Drive covers


Item	Description	Part number	Image
1	Dog clutch	1000406	
2	Drive chain	1004646	

## Floor chain

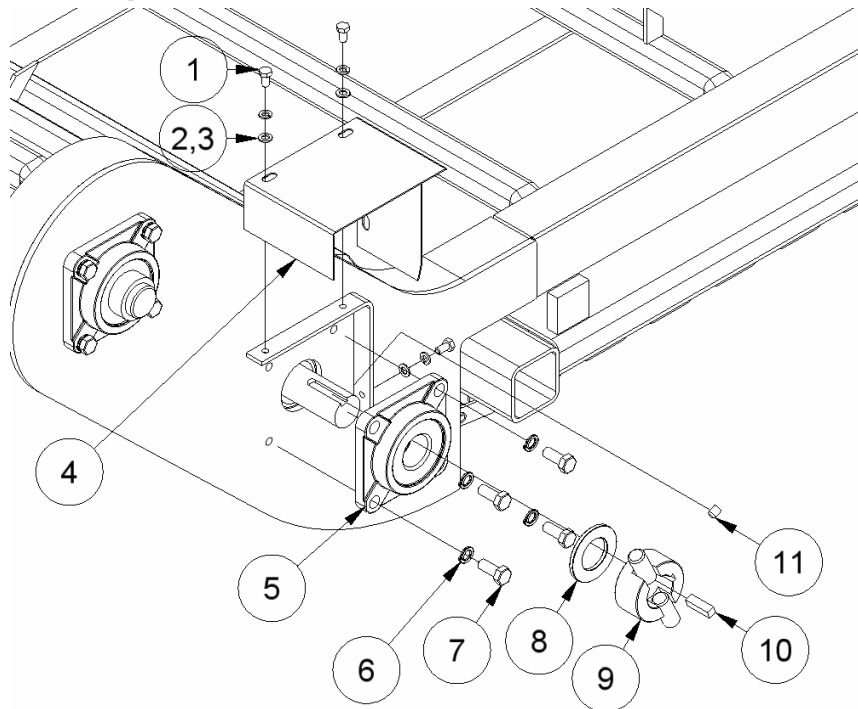
Description	Part number	Chain	Floor bar		
			Straight	Dual spiked	Triple spiked
		C2082H	1002408	1490	2163
Twin shredder	2166	140	11	0	0

## Hydraulic drive coupling



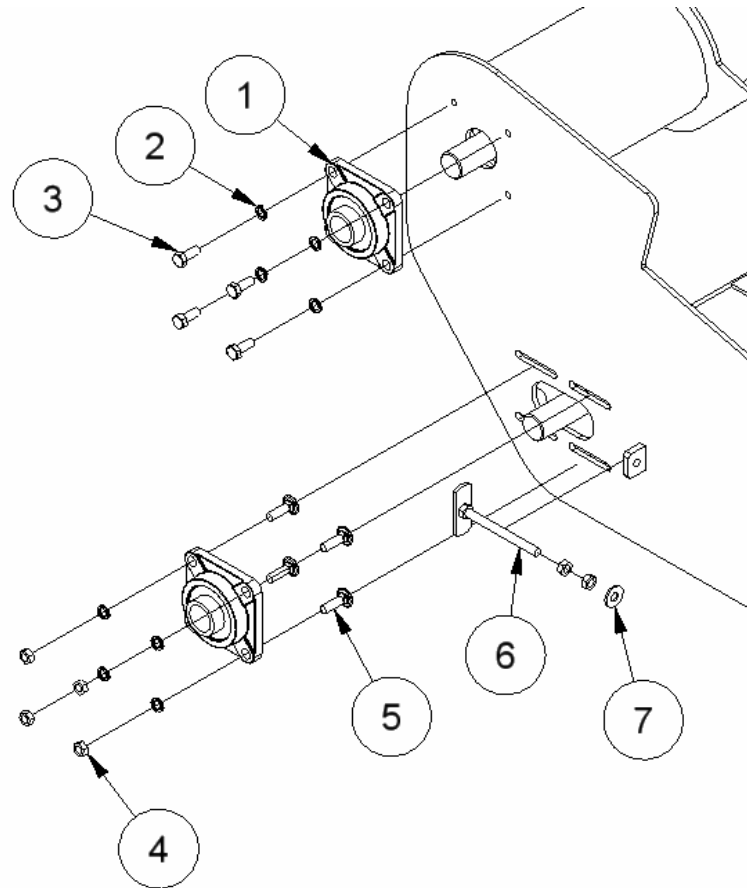
Item	Description	Part number	Image	Quantity
1	Fork drive dog	1992		1
2	Grub screw	M10 x 1.5		2
3	Bolt	M12 x 40		4
4	Hydraulic motor	Parker 405 or Danfoss OMH 500		1
5	Spring washer	M12		4
6	Nut	M12		4

## Input coupling



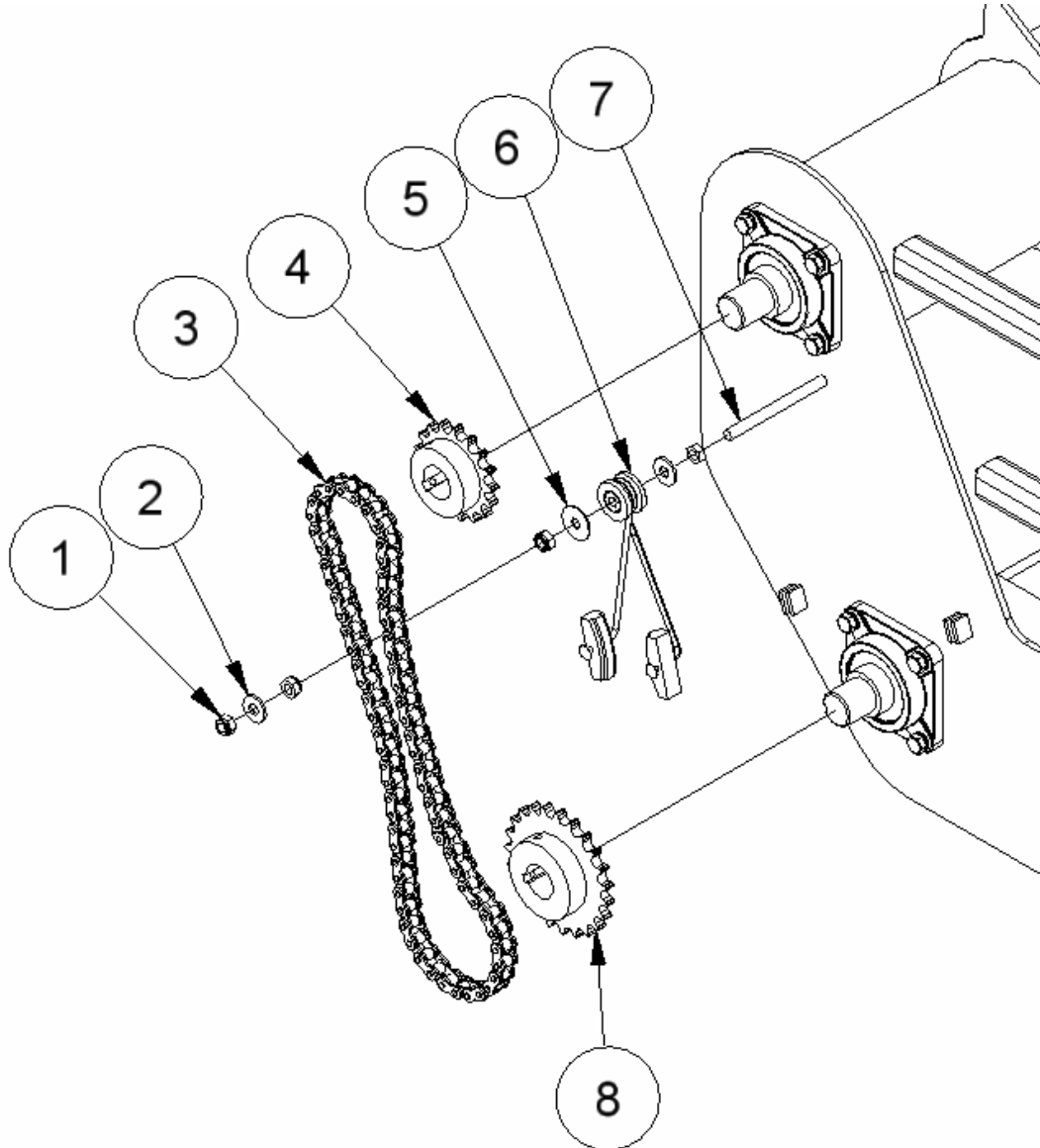
Item	Description	Part number	Image	Quantity
1	Bolt	M8 x 16		3
2	Spring washer	M8		3
3	Flat washer	M8		3
4	Drive cover	1000406		1
5	Input bearing	1001502		1
6	Spring washer	M12		4
7	Bolt	M12 x 30		4
8	Clutch washer	1004430		1
9	Feeder drive dog	1146		1
10	Key	10 x 10mm		1
11	Grub screw	M10 x 1.5		1

## Bearing arrangement


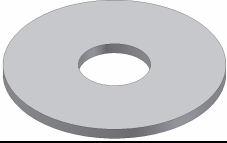




Item	Description	Part number	Image	Quantity used	
				Fixed	Slotted
1	Bearing	1001159		1	1
2	Spring washer	M12		4	4
3	Bolt	M12 x 30		4	0
4	Nut	M12		0	4
5	Coach bolt	M12		0	4
6	Adjuster	1071		0	1
7	Flat washer	M12		0	1

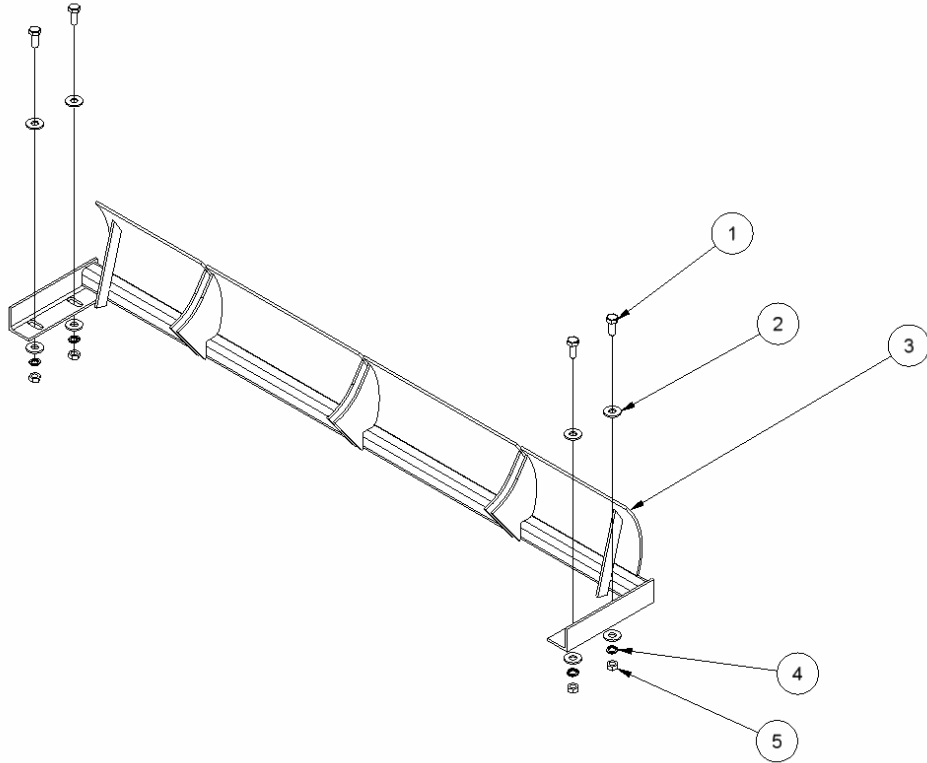
## Drive chain




Item	Description	Part number	Image	Quantity used
1	Nyloc nut	M12		3
2	Flat washer	M12		2
3	Drive chain: Fixed bottom bearing Slotted bottom bearing	1191 1192		1



4	17T sprocket Key	1000915  10 x 10		1
5	Penny washer	M12		1
6	Chain tensioner	2046		1
7	Cover mount	1000880		1
8	23T sprocket Key	1000914  10 x 10		1
9	Nut	M12		1
10	Grub screw	M10 x 1.5		4

## Shredder comb

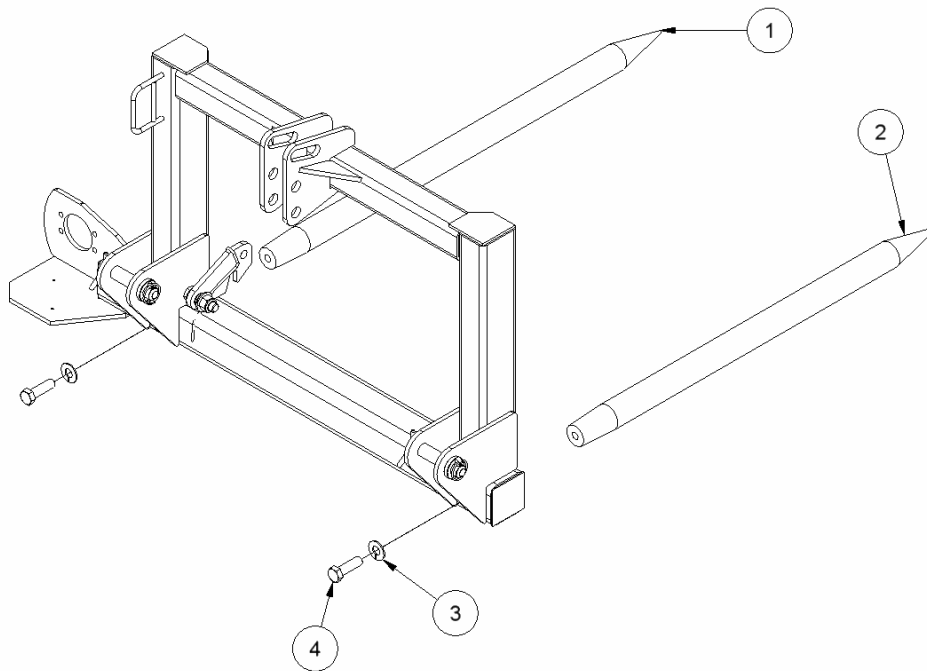



Item	Description	Part number	Image	Quantity used
1	Bolt	M12 x 30mm		4
2	Flat washer	M12		8
3	Shredder comb	1073		1
4	Spring washer	M12		4
5	Nut	M12		4

## Linkage pins

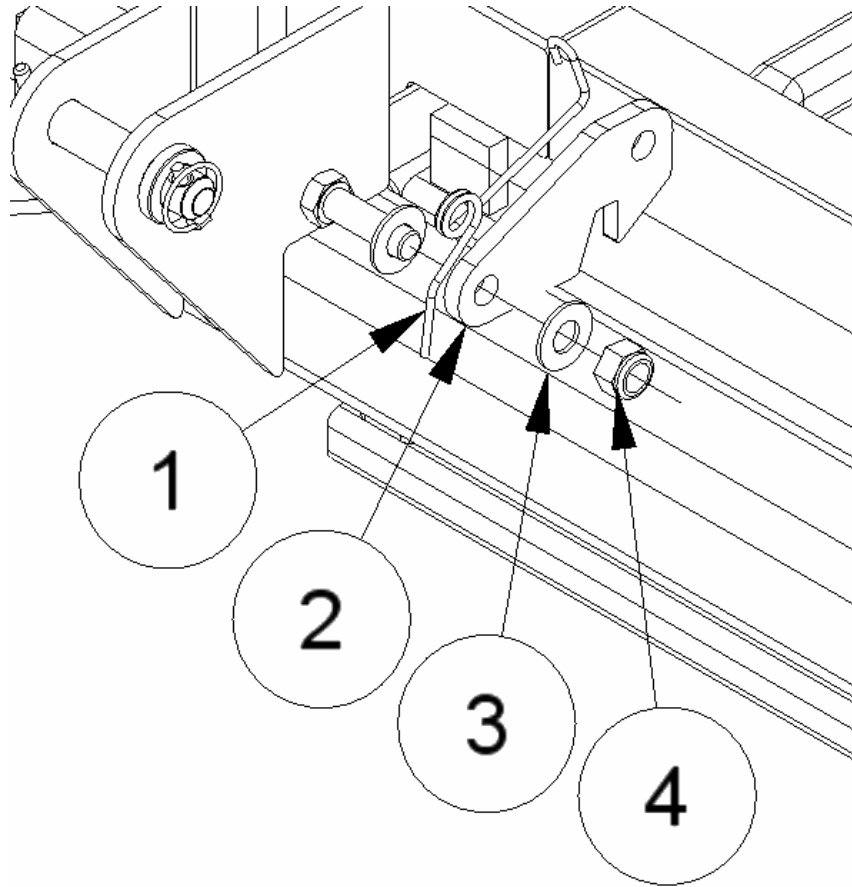
Item	Description	Part number	Image
1	Main pin	1402	
2	Lynch pin	8mm	



## Loading tines



Item	Description	Part number	Image	Quantity
1	1150 loading tine	1004385		1
2	1050 loading tine	1004384		1
3	Set screw	M20 x 40		2
4	Spring washer	M20		2

## Locking catch



Item	Description	Part number	Image	Quantity
1	Spring	1004329		1
2	Catch	P_117		1
3	Flat washer	M20		2
4	Nyloc nut	M20		1