

Spare parts

Before ordering any spare parts, determine the model and serial numbers together with the delivery date and include this information with all orders. The model and serial numbers can be found on the side of the drawbar directly in front of the feed out chamber.

YOUR MACHINE IS

MODEL _____

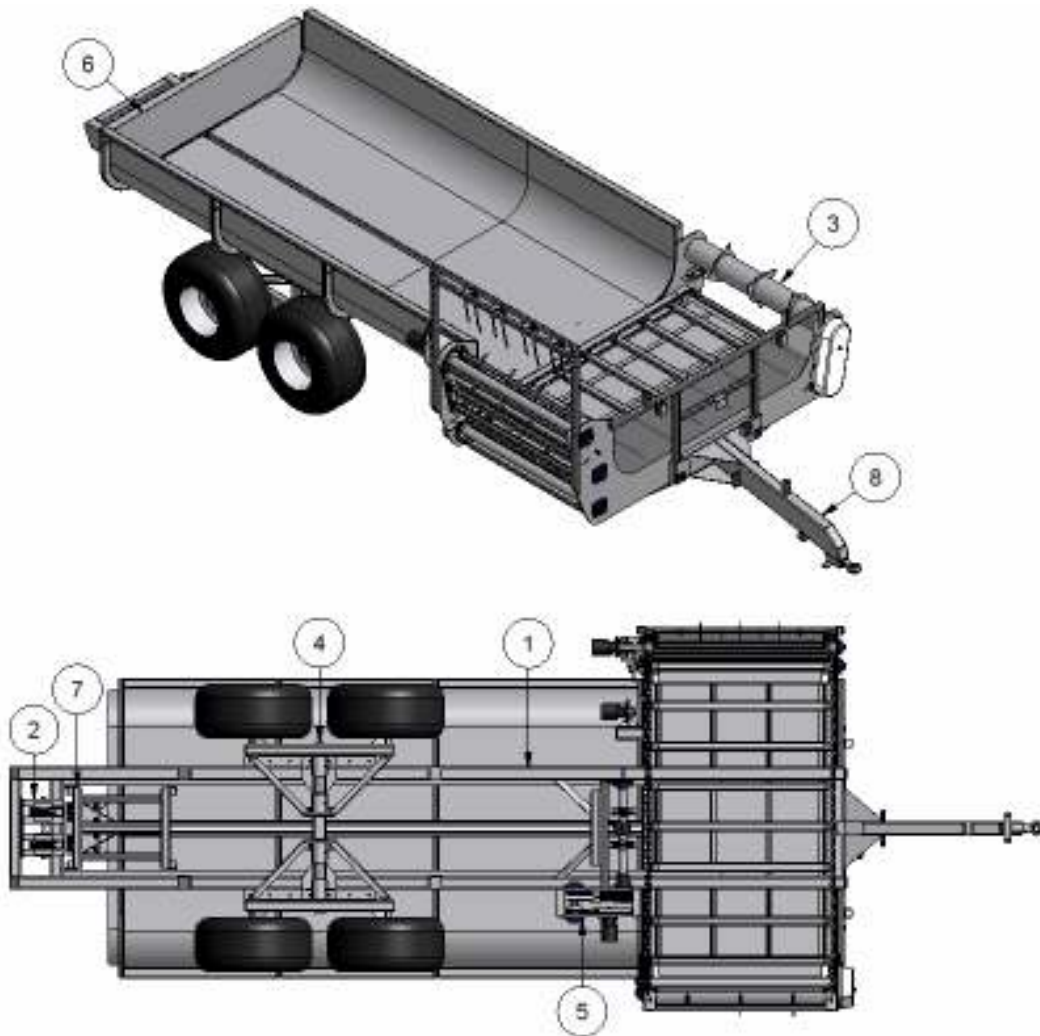
SERIAL No _____

DATE OF MANUFACTURE _____

DATE OF DELIVERY _____



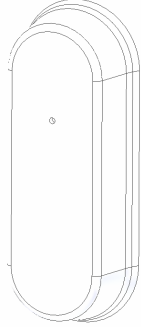



 AGMECH	
FREE PHONE 0800 422 533	
MODEL No.	
SERIAL No.	
Box 16590 Christchurch New Zealand	



Item	Description
1	Chassis
2	Rear shuttle sprockets
3	Feedout chamber
4	Tandem unit
5	Shuttle drive
6	Pusher
7	Slide frame
8	Drawbar



Drive covers

Description	Part Number	Image	Quantity used
Floor drive cover	1560		1
Elevator drive cover	1000603		1
Shredder drive cover	1004646		1
Catch plate	1137		1



Drawbar

Item	Description	Part Number	Image	Quantity used
1	Jack	RIMA 10405		1
2	Jack pin	1128		1
3	Tow eye	1001100: TOWING EYE 009		1
4	Pedestal QRC hose holder	1083 1000895		1 4

Floor and elevator chain

Item	Description	Part number	Image
1	Floor chain	2212	
2	Fixed elevator chain	2208	
3	Folding elevator chain		

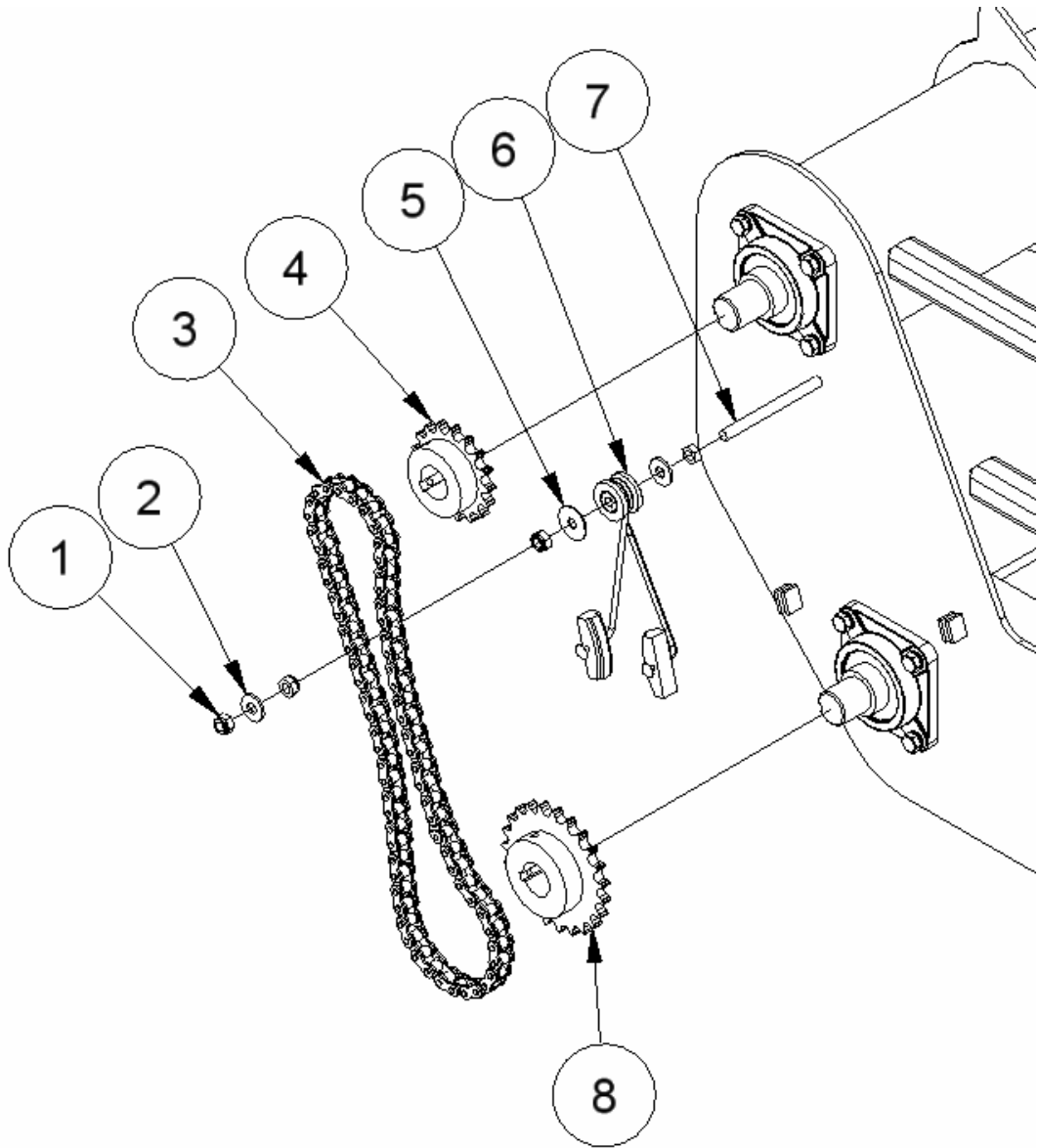
Floor chain


Item	Description	Part number	Image	Quantity used
1	Complete chain and bars	2212		1
2	Floor bar	1004660		17
3	Chain	C2082		208

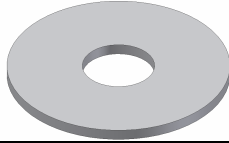


Elevator chain

Item	Description	Part number	Image	Quantity used

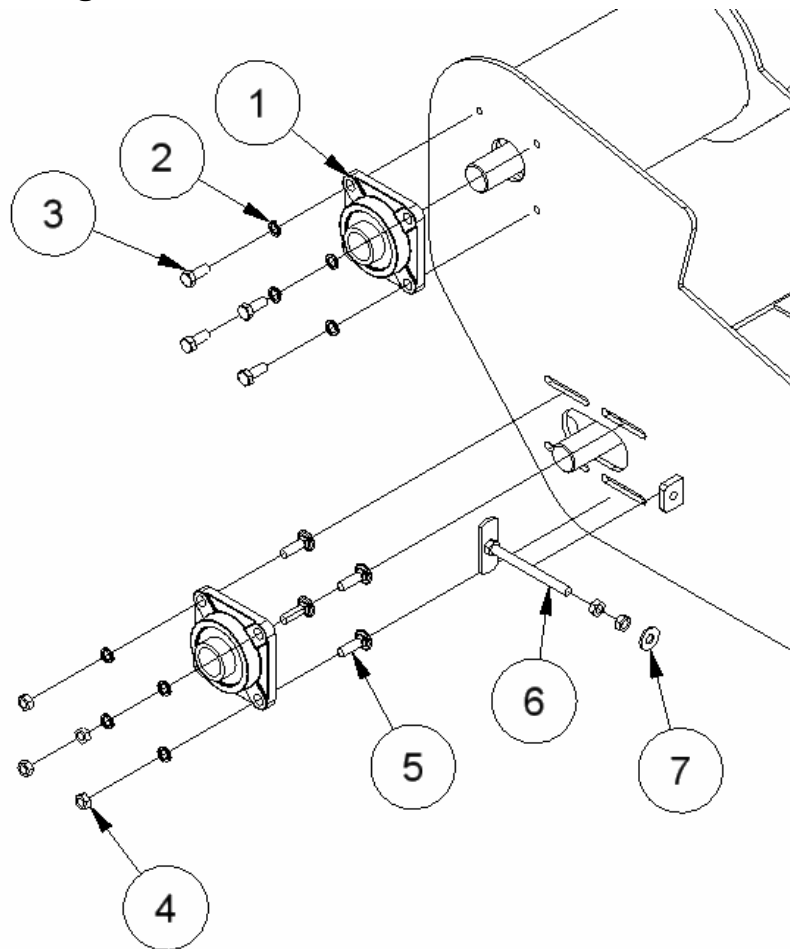
Shredder drive chain



Item	Description	Part number	Image	Quantity used
1	Nyloc nut	M12		3
2	Flat washer	M12		2
3	Drive chain	?		1
4	17T sprocket	1000915		1
	Key	10 x 10mm		

5	Penny washer	M12		1
6	Chain tensioner	2046		1
7	Cover mount	1000880		1
8	23T sprocket Key	1000914 10 x 10mm		1
9	Nut	M12		1
10	Grub screw	M10 x 1.5		4

Bearing arrangement

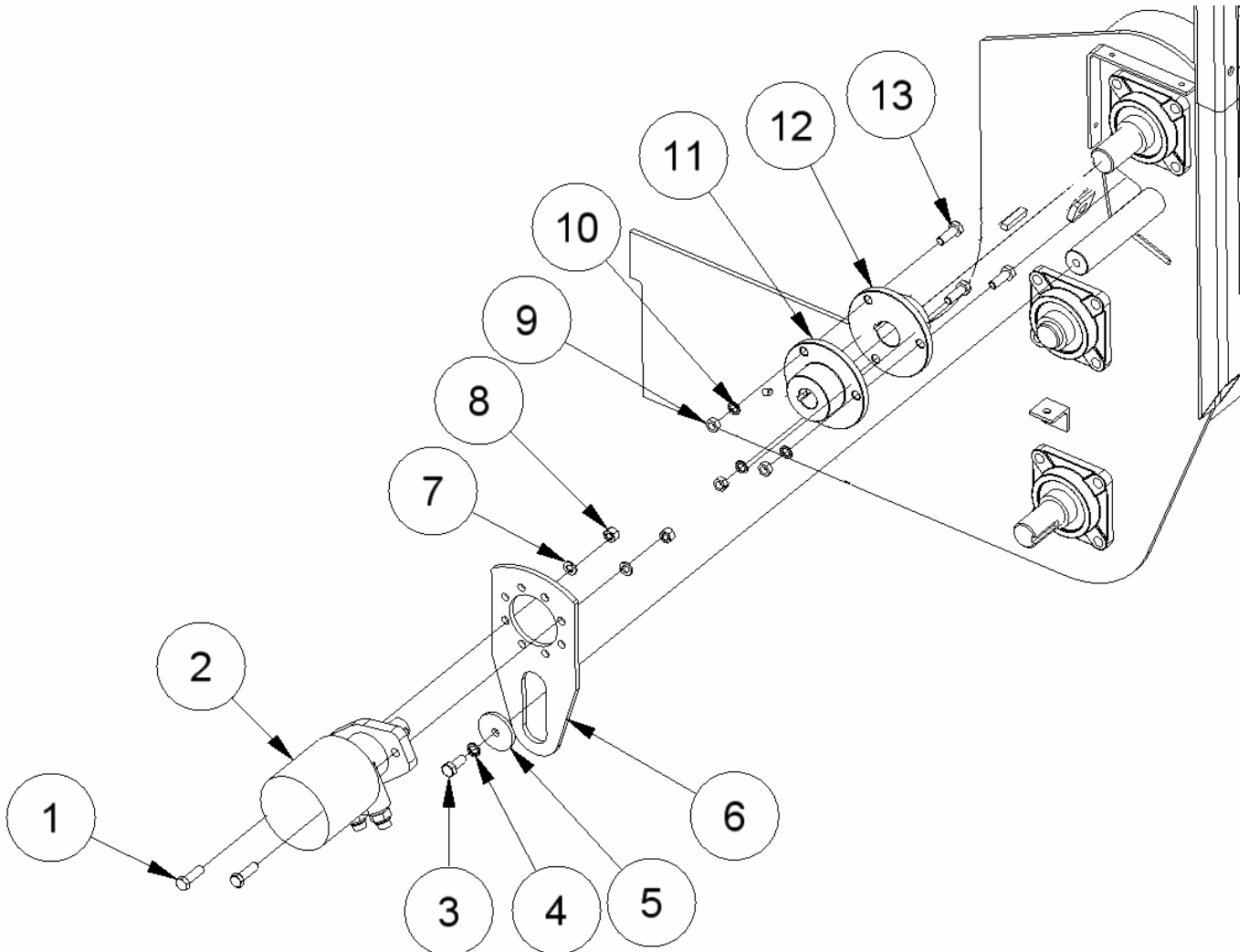



Item	Description	Part number	Image	Quantity used	
				Fixed	Slotted
1	Bearing	1001159		1	1
2	Spring washer	M12		4	4
3	Bolt	M12 x 30		4	0
4	Nut	M12		0	4
5	Coach bolt	M12		0	4
6	Adjuster	1071		0	1
7	Flat washer	M12		0	1

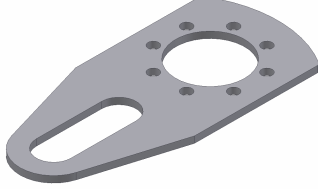




Floor drive

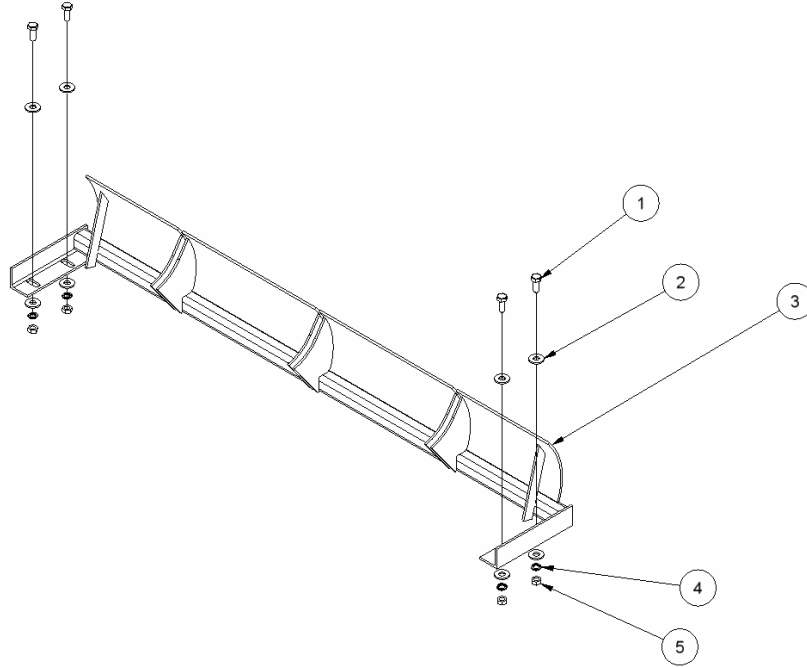
Elevator input coupling




Item	Description	Part number	Image	Quantity used
1	Bolt	M12 x 40		2
2	Hydraulic motor	Parker 330		1
3	Bolt	M12 x 30mm		1
4,7	Spring washer	M12		3
5	Torque arm washer	1000921		1

6	Motor mount	P_014		1
8,9	Nut	M12		5
10	Wedge lock washer	M12		3
11	Hydraulic motor coupling Key	1001377 5/16" x 5/16"		1
12	Input shaft coupling Key	1001127 10 x 10 x 47mm		1
13	Bolt	M12 x 35mm		3
14	Grub screw	M10 x 1.5		4

Shredder comb

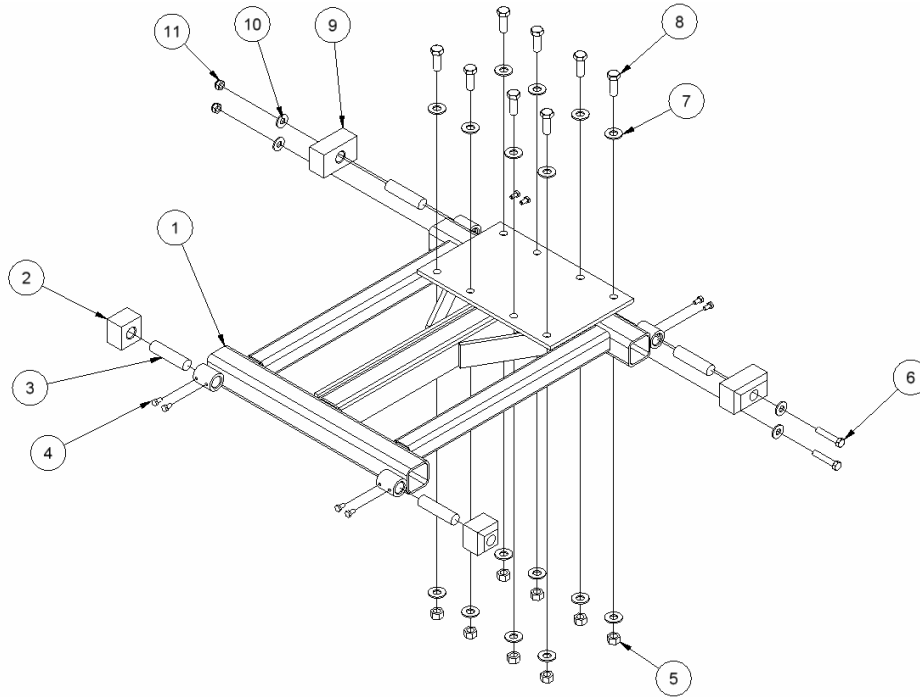




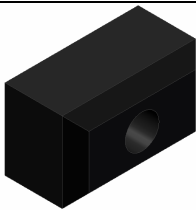
Item	Description	Part number	Image	Quantity used
1	Bolt	M12 x 30mm		4
2	Flat washer	M12		8
3	Shredder comb	1073		1
4	Spring washer	M12		4
5	Nut	M12		4



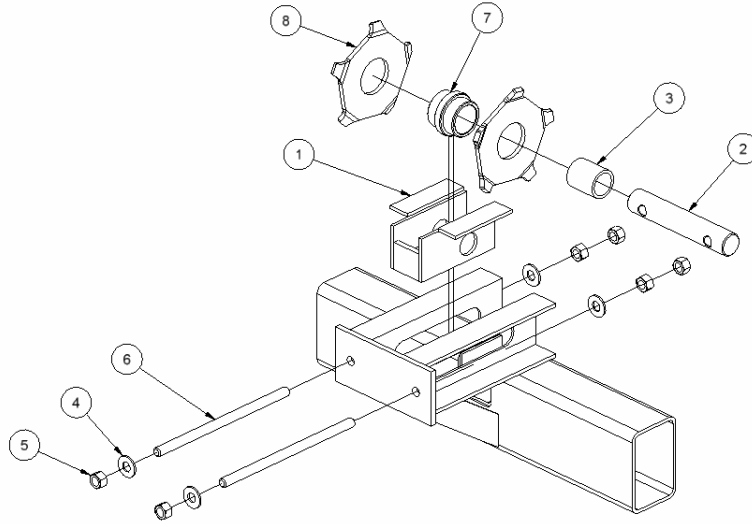
Shuttle drive

Slide frame



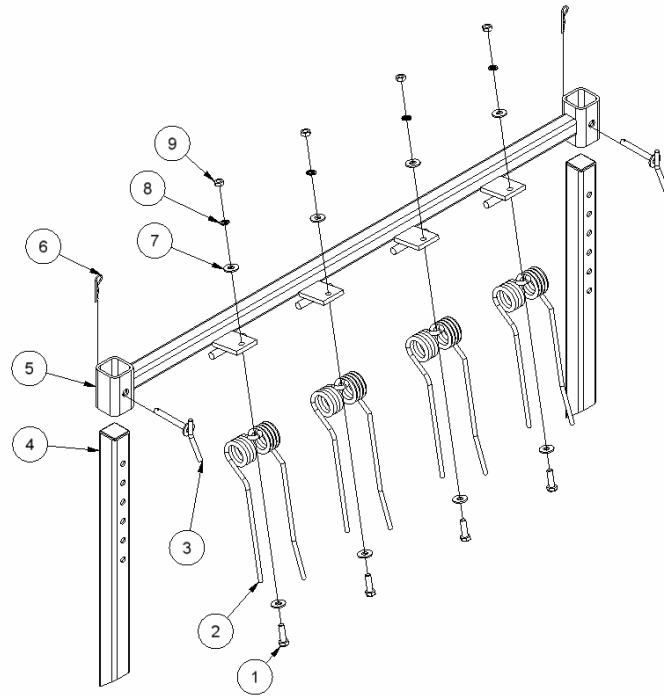
Item	Description	Part number	Image	Quantity used
1	Slide frame	2403		1
2	Support block, front	1000904		2
3	Support mount	1000900		4
4	Bolt	M8 x 16mm		8
5	Nut	M16		8
6	Bolt	M12 x 65mm		4
7	Washer	M16		16
8	Bolt	M16 x 45mm		8
9	Support block, back	1004644		2
10	Washer	M12		8
11	Nut	M12		4






Rear shuttle sprocket



Item	Description	Part number	Image	Quantity used	
				Per sprocket	Total
1	Scraper	1883		1	21
2	Pin	1000622		1	21
3	Internal bush	1003686		1	21
4	Flat washer	M16		4	8
5	Nut	M16		6	12
6	Adjuster rod	1000627		2	4
7	Sprocket mount bush	1000629		1	2
8	Sprocket profile	P_019		2	4

Teaser tines



Item	Description	Part number	Image	Quantity used
1	Bolt	M12 x 40		4
2	Tine	1001042		4
3	Pin	1128		2
4	Upright	1947		2
5	Crossbar	1946		1
6	R-clip	1001041		2
7	Flat washer	M12		8
8	Spring washer	M12		4
9	Nut	M12		4



Hydraulic components

Feeder model	Hose kit	Control valve	Cross line relief valve	Floor drive motor	Elevator drive motor	Shuttle drive motor
Fixed elevator	9915	HCV 1918A				
Folding elevator with electric over hydraulic control	9922	SD6 remote block		Parker 405	Parker 330	Parker 530