

## Hydraulic components

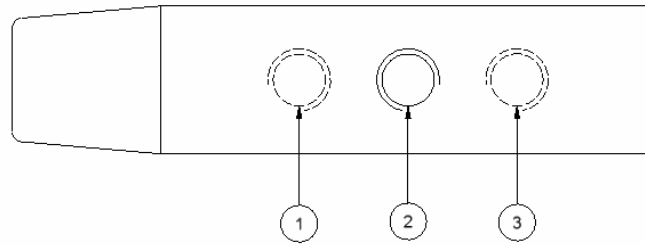
Hose kit	Control valve	Cross line relief valve	Floor drive motor	Elevator drive motor	Shuttle drive motor
9922	SD6 remote block		Parker 405	Parker 330	Parker 530

## Hydraulic hoses

Item	Between	
	Tractor and inside port	Tractor and outside port
<b>Hose</b>		
½" single braid wire hose	4.0m	4.5m
<b>Hose ends</b>		
½" BSPP male	1	1
½" BSPP female	1	
½" BSPP Compact 90° Female		1
<b>Fittings</b>		
½" BSPP Male QRC	1	1
½" BSPP Male barrel nipple	1	1
<b>Seals</b>		
½" Doughty seal	2	2

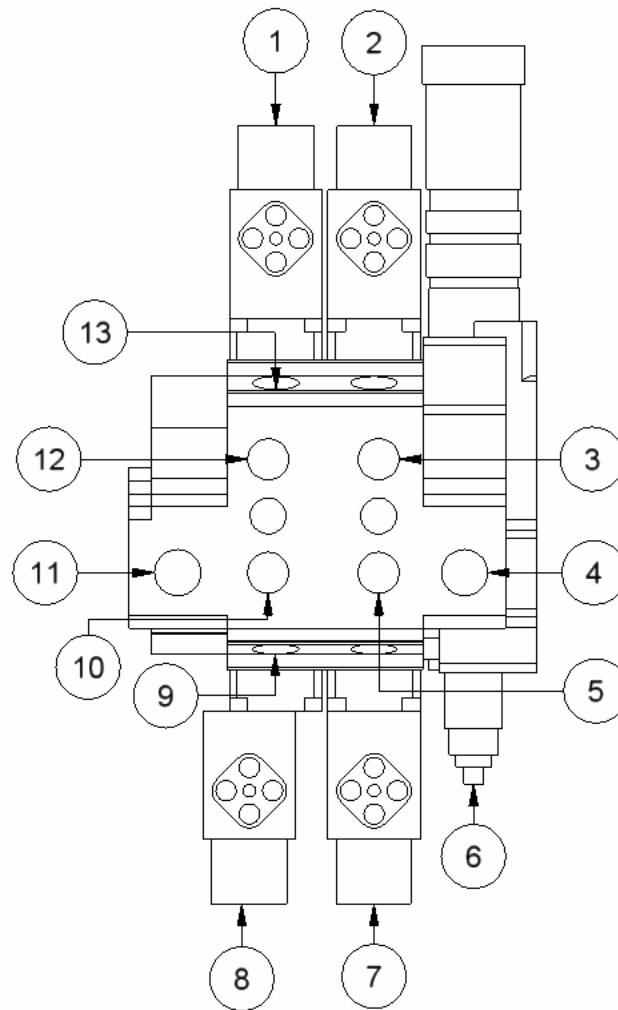
Item	Between						
	Tractor & diverter valve	Diverter valve and elevator motor	Diverter valve and elevator motor via tee	Diverter valve and remote block	Remote block and floor motor	Remote block and shuttle motor	Remote block and tractor
<b>Hose</b>							
½" single wire braid	5.8m	2.0m	2.0m	0.5m	0.5m	2.6m	5.75m
<b>Hose ends</b>							
½" BSPP male	1						1
½" BSPP female		1	2	1			
½" BSPP Compact 90° Female	1	1		1	2	2	1
<b>Fittings</b>							
½" BSPP Male QRC	1						1
½" BSPP Male barrel nipple	1	1		1			2
½" BSPP male extended barrel nipple			1	1			
½" BSPP to 3/8" BSPP male barrel nipple					1	1	
½" BSPP to 7/8" UNO barrel nipple		1	1		1	1	
½" BSPP male, male to female tee			1	1			
½" BSPP female check valve							1
<b>Seals</b>							
3/8" Doughty					2	1	
½" Doughty	2	1	1	2			4

### 3 port diverter valve



Item	Description	Destination
1	Outlet	Remote block and elevator motor via tee
2	Inlet	Tractor
3	Outlet	Elevator motor

## SD6 remote block



Item	Description	Operation/ Setting
1	Hershmann plug	Shuttle forwards
2	Hershmann plug	Floor forwards
3	Floor drive	Floor forwards
4	Oil inlet	Return from elevator motor
5	Floor drive	Floor reverse
6	Block relief valve	2000 psi
7	Hershmann plug	Floor reverse
8	Hershmann plug	Shuttle reverse
9	Cross line relief valve-reverse	700 psi
10	Shuttle drive	Shuttle reverse
11	Oil outlet	Return to tractor
12	Shuttle drive	Shuttle forwards
13	Cross line relief valve- forwards	1800 psi