

AGMECH LOADMASTER



MANUFACTURERS OF QUALITY MACHINERY

**THIS MANUAL COVERS THE FOLLOWING RANGE OF
AGMECH LOADMASTER FARM TRAILERS**

**LOADMASTER 3
LOADMASTER 4
LOADMASTER 5
LOADMASTER 6
LOADMASTER 8
LOADMASTER 10
LOADMASTER 12**

OPERATIONAL MANUAL

Agmech Ltd
PO BOX 16 590, HORNBY
CHRISTCHURCH
NEW ZEALAND

PHONE ++64 (03) 344 1322
FAX ++64 (03) 344 5659



Introduction	3
Safety	4
Attaching to the tractor	6
Unloading the trailer	7
Removing the tailgate	8
Removing the sides	8
Maintenance	9
Before daily operation	9
Every 50 hours of operation	9
Every 3-4 months	9
Optional extras	10
Spare Parts	11
Drawbar	11
Drawbar	12
Tailgate	13
Rear Deck Hinge	14
Hydraulic Ram	15
Hydraulic Hose Kit	16
Brake arm setup	17
Brake Hose Kit	18
Troubleshooting	19
Terms and conditions of manufacture and supply	20



Introduction

We are very pleased to be able to offer you our extensive range of Farm Trailers. These Trailers are capable of many years of operation, they are fast becoming the trailer that set the standard! We are pleased that our customers appreciate the features that we have added following years of development work with both customers and our engineers.

What we have aimed to achieve is:-

- A robust trailer capable of handling all farm operations whilst maintaining the ability to be diverse as possible
- A functional trailer that exceeds your expectation in the field.
- Engineered, design and ascetics of the trailer prove to give you maximum longevity
- The price ensures that the unit is competitive whilst considering 'like for like'
- Optional equipment ensures all customers requirements are catered for

The Loadmaster range of trailer is designed for general farm use, with a fast tipping body that goes to 60° that will ensure even sticky loads will tip. Full RHS chassis with single drawbar member gives high strength and maximum turning circle. Most of these trailers have been sold with tandem axles, whereas the single axle model gives no wheel scrub when turning and is cheaper. The sides are hinged (& removable) with a tailgate that lifts off its hinges, allowing the trailer to be used without the rear door as there are corner sockets in the deck that locate the tailgate posts for securing the sides. This makes this a very diverse trailer for any operation. Many of these are sold with a 1.2m extension that neatly secures into the top deck allowing round bales to be loaded once the sides are removed.

A particular feature is that the headboard can lift out of its locating sockets. Bolsters can then be fitted to the four corner sockets making the flatbed ideal for pole transport. The flat deck is then the basis for the silage or grain bins (if requested), its comes either as a quick fit bolt together flat-pack or a fully welded crate, with a mesh window and full silage door with a central mesh panel allowing air to escape as well as assisting with visibility when reversing. The silage door has four locking options either top hinged, locking on the auto door arms, mechanical opening as the trailer tip's or fully hydraulic up and over doors. The silage kits are strong, durable, functional giving years of uninterrupted service (individual requirements can be catered for on request).

The mechanical opening tailgate is extremely popular option that allows the tailgate can open at variable degrees and has the aperture fixed by spreading chains (as option) ensuring the right amount of material is spread.

For on road compliance of this vehicle please stipulate this at point of sale, all our welders are 4711 certified and all designs are to ISO 9002 compliance. We can advise you on whether braking needs to be added.

Safety

Before operation of this machine, please ensure yourself and all additional operators are trained in the correct operating procedures and aware of all safety requirements and potential hazards.

General Safety Precautions:

1. Take all practical steps to ensure the safety of yourself and others.
2. Where possible, read and understand the applicable Health and Safety regulations for your area.
3. Before attempting to operate the machine the operator must be fully trained and familiar with the safe working limits, controls and operator instructions as detailed in this manual.
4. Ensure all guards remain in place during operation.
5. Keep clear of all moving parts and be aware of pinch points.
6. Do not perform any maintenance or repairs without shutting off the tractor beforehand.
7. Exercise caution whenever working with hydraulics.
8. You must eliminate if practicable, or otherwise isolate or minimise all significant hazards and report to your Safety Officer or Supervisor IMMEDIATELY every hazard or safety problem that you notice.
9. If you witness an accident or incident where someone was or could have been injured, you MUST report it as soon as you can.
10. For serious accidents the entire accident scene must not be interfered with until authorised by an inspector from the appropriate Health and Safety Authority, unless absolutely necessary to save life, property, etc.
11. If you received an injury while at work it MUST be reported immediately to your Supervisor or Safety Officer. The accident will be recorded on either a form for Record of Accident/Serious Harm or a form for Minor Accident or Near Miss Report. If a work injury is not reported on the day the injury occurs it may not be accepted as a work related injury and which could affect your work accident insurance.



Specific safety hazards:

Failure to comply with the following safety requirements could result in serious personal injury or loss of life.

- Do not remove drawbar pin without support jack in place and wheels chocked.
- No person shall be permitted to ride on the machine at any time.
- **Under no circumstance** shall a person be underneath the raised deck without suitable supports between the chassis and the underside of the deck.
- Keep fingers clear of tail door hinges and latches.
- No person should be in the area between the tractor and the front of the deck unless the tractor is in neutral with the park brake securely on.
- Keep clear of overhead power lines with the deck raised.
- Keep clear of rear of tray when unloading.

Attaching to the tractor

Once the contents of this manual have been read and understood, familiarize yourself with the trailer and each of the components before selecting a tractor.

When selecting a tractor to operate the trailer please consider the following;

1. The terrain and conditions you will be operating in.
2. The tare weight of the trailer you are using
3. The approximate payload you will be carrying.
4. The availability of a single set of double acting hydraulic outlets, with suitable oil flow.
5. The tare weight of the tractor.
6. Whether the towing tractor is fitted with foot pedal braking.
7. Whether you will be travelling on a public highway and therefore the local regulations you will be required to follow.

All of the above factors are relevant to ensure safe and successful operation of the trailer.

Connecting up the trailer

The trailer will be fitted with a fixed tow eye as standard. These tow eyes are rated to European standard of origin and comply with all relevant T.U.V. and D.I.N. compliance codes.

Important: Please ensure that you have studied the tractor manufacturer recommended drawbar load rating and the trailer is not going to exceed this.

Assuming that the tractor is fitted with the standard double clevis type drawbar then it is good practice to ensure that the tractor and trailer are permanently attached by fitting cross over safety chains (this may be enforced in some countries), these are not supplied as standard but can be purchased from the manufacturer.

It is also favourable to fit a spacer bush (if required) between the tow eye and drawbar pin, this will prevent un-necessary drawbar pin wear as well as increasing operator comfort by eliminating fore and aft banging. These bushes are not supplied as standard but can be purchased from the manufacturer.



For attaching the trailer to a standard double clevis drawbar;

1. Set the height of the trailer drawbar to match the selected tractor using the supplied jack on the trailer.
2. Make sure you have a suitable drawbar pin and lynch pin/R-clip to fit pin.
3. With the tractor drawbar in the central position, reverse up to the trailer until the drawbar and trailer tow eye overlap.
4. Fit the drawbar pin and spacer bush if required, lock the drawbar pin in place using a pin or clip to prevent the drawbar pin from jumping out during operation.
5. Fit the safety chains between the tractor and trailer drawbar, ensuring there is sufficient slack in each chain when under full steering lock.
6. Wind the jack fully in, pull the pin holding the jack to the drawbar and transfer the jack to the transport position on the side of the main chassis underneath the deck. Ensure you lock the jack in place using the pin before moving off.
7. Connect up the hydraulic hoses to the outlets on the tractor. **Make sure each coupling is clean before connecting.**

Unloading the trailer

The Agmech loadmaster range of trailers comes standard with either a top hinged detachable tailgate with auto opening door or a bottom hinged tailgate with top locking anti-loose latches.

The detachable tailgate is ideal for situations where large bulky items, such as timber or boulders, may want to be transported which would otherwise jam the tailgate.

1. To unload the trailer, select a relatively level spot where you wish to dump the load.
2. Release the tailgate if manually operated, careful to avoid any material which may be built up behind the tailgate.
3. Begin lifting the deck using the hydraulic remote the hoist ram is connected into.
4. Once the deck is fully raised, you can begin to move forward slowly to let the load slide off the deck.
5. Lower the deck and close the tailgate and you are ready for your next load.
6. If spreading dirt or metal, adjust the spreader chains to deliver the desired thickness i.e. shorting the chains up will deliver a light spread of material whereas lengthening the chains out will deliver a thick spread of material.
7. As you raise the deck begin to drive forward, continually raising the deck as you travel forward, try to keep a constant speed to deliver a nice even spread.

Removing the tailgate

The tailgate is detachable on all loadmaster trailers to allow the trailer to be used for a variety of different tasks. To remove the tailgate on all top hinged models the following guidelines may be useful.

1. Remove the two bolts above the tailgate hinge.
2. Lift the tailgate locking arm clear of the tailgate, so the tailgate is free to open, hold the arm up by adjusting the chains which attach to the main trailer chassis.
3. Lift the tailgate out of the sides and transfer to storage. This is easily done by opening the tailgate with a crowbar or similar and with a loader fitted with a set of forks, slide the tines carefully between the tailgate and the trailer deck. Lift the tailgate directly up to release the pivot pins.
4. Replace the two bolts previously removed, and re-adjust the chains to their original positions.

Removing the sides

The sides are hinged and detachable on all loadmaster trailers to provide a flat deck when required. The following guidelines have been put together as a helpful guide.

1. Disconnect the chains between the locking arm and the main chassis.
2. Remove the bolts securing the sides to the headboard and rear corner posts.
3. The sides can now be either hinged down or lifted off depending on requirements.
4. The headboard and rear corner posts can be lifted out of their sockets if desired.

The 10 and 12 tonne models come standard with two piece sides with removable uprights that allow half the side to be removed if desired. The sides can be removed following the same steps as above.

Maintenance

The following guidelines if followed correctly will allow for many years of successful operation.

Please check all Nuts & bolts prior to use, then after 8 hours of use and finally after 100 hours of operation, this will ensure everything will remain tight. Then seasonal servicing will be sufficient to maintain the feeder.

Greasing can easily be performed using a standard hand held grease gun with general multipurpose grease.

Before daily operation

- Visually inspect all components of the trailer for wear or damage.
- Check the tyres for wear and tyre pressure.
- Check the condition of the drawbar pin/tow eye and safety chains (if fitted)

Every 50 hours of operation.

- Grease the support jack if fitted with grease nipples.
- Grease the wheel bearings if fitted with grease nipples, some units are factory greased and sealed eliminating the need for maintenance.
- Check the hoist and tray pivot pins and bushes for excessive wear.
- Grease the pivot pins on the hoist ram.
- Grease the hinge pins on the rear of the tray.
- Grease the tandem unit pivots and check for excessive wear in the pins and bushes (if fitted)
- Check the hoses and springs on brake setup (if fitted)
- Check the hydraulic hoses and hoist ram for leaks.

Every 3-4 months

- Check the wheel bearings for excessive movement.



Optional extras

We offer a range of optional extras for the loadmaster range of trailers with the ability to custom build to meet any specific requirements.

The range of standard optional extras offered includes;

- Automatically opening tailgate: saves having to get out of the tractor seat and greatly increases productivity.
- Spreading chains: allows dirt or metal to be spread with ease.
- Silage crate: allows the trailer to be used during the harvesting period, ideal for difficult access and soft paddocks. A range of crate and tail door options are available.
- Grain bin: specifically designed for carting grain during the harvest period.
- Hay extension: increases the deck length, allowing for a greater number of bales to be transported at once.
- Road lights: recommended when operating on public roads.

Spare Parts

Before ordering any spare parts, determine the model and serial numbers together with the delivery date and include this information with all orders. The model and serial numbers can be found on the side of the drawbar directly in front of the deck.

YOUR MACHINE IS

MODEL _____

SERIAL No _____

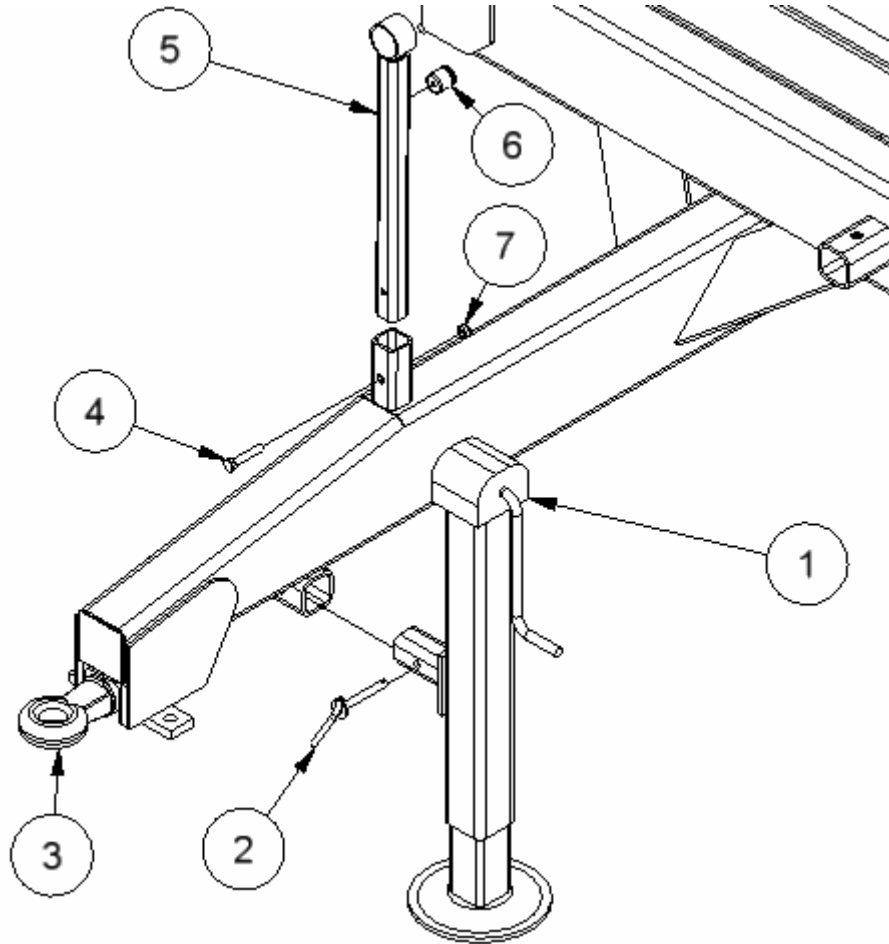
DATE OF MANUFACTURE _____

DATE OF DELIVERY _____



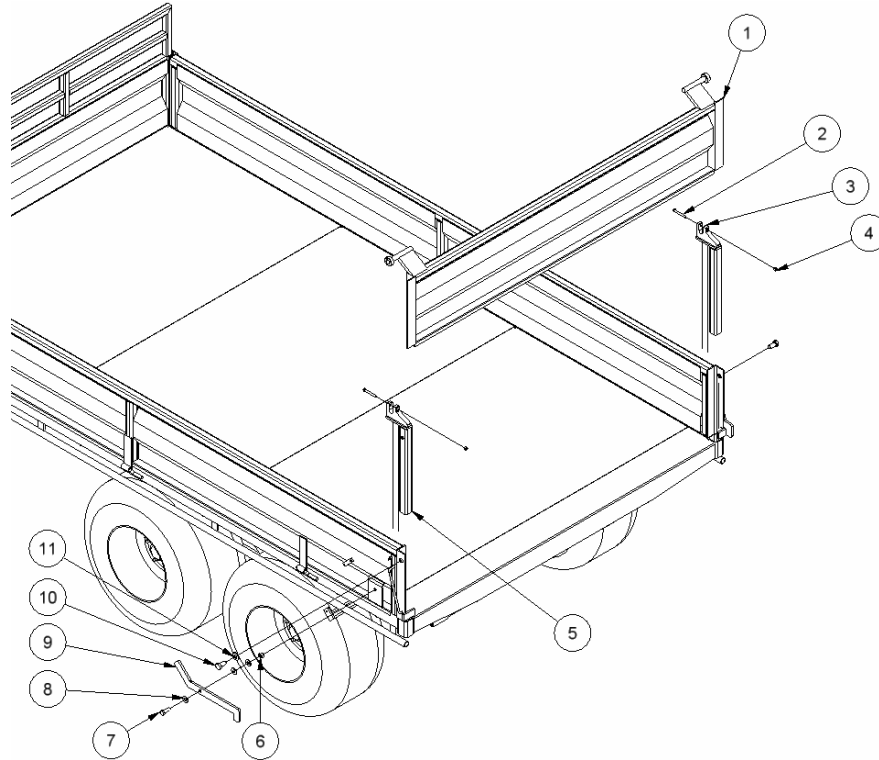
 AGMECH	
FREE PHONE 0800 422 533	
MODEL No.	<input type="text"/>
SERIAL No.	<input type="text"/>
Box 16590 Christchurch New Zealand	




Drawbar



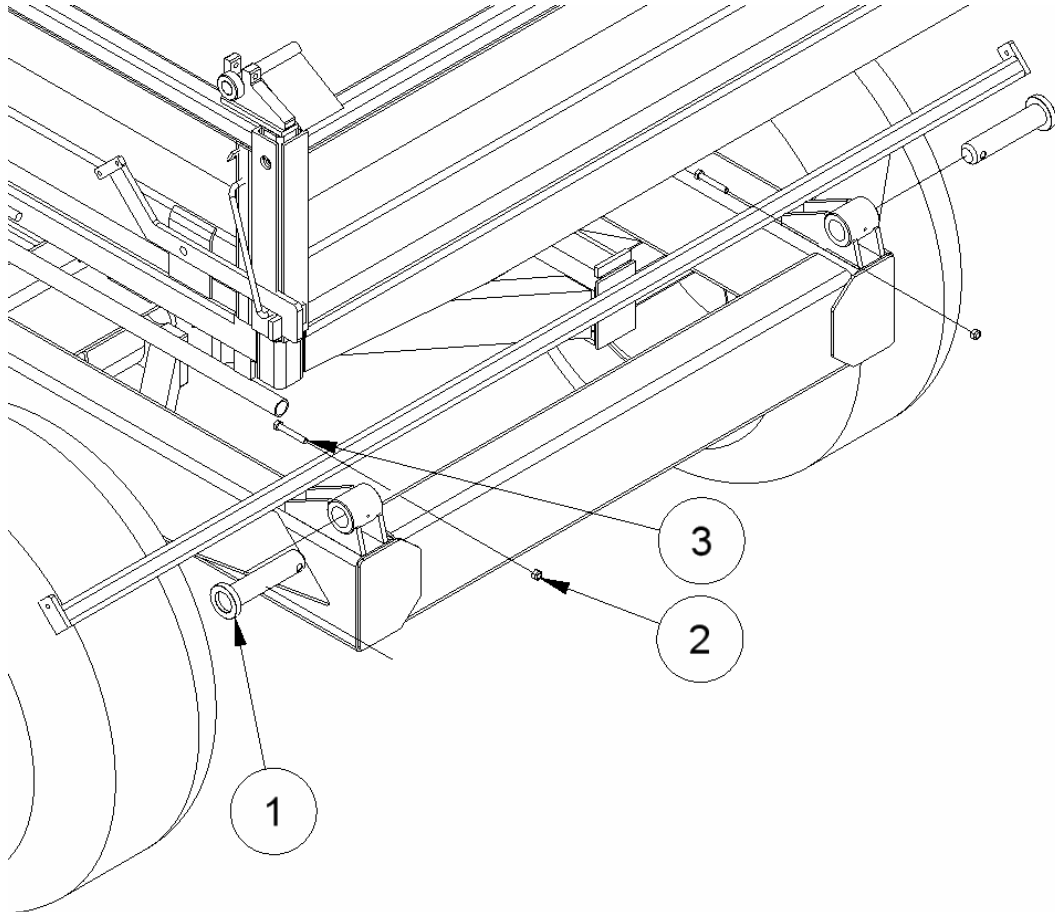
Model	Item						
	1	2	3	4	5	6	7
	Jack	Jack Pin	Toweye	Bolt	Pedestal	QRC Hose holder	Nut
1.03	1409-			M12 x 65	1434-	1000895	M12
1.04	AGMECH 2BF				single hose		
1.05		1128			1083- multiple hoses		
1.06	RIMA 10405						
1.08							
1.10							
1.12							

Tailgate



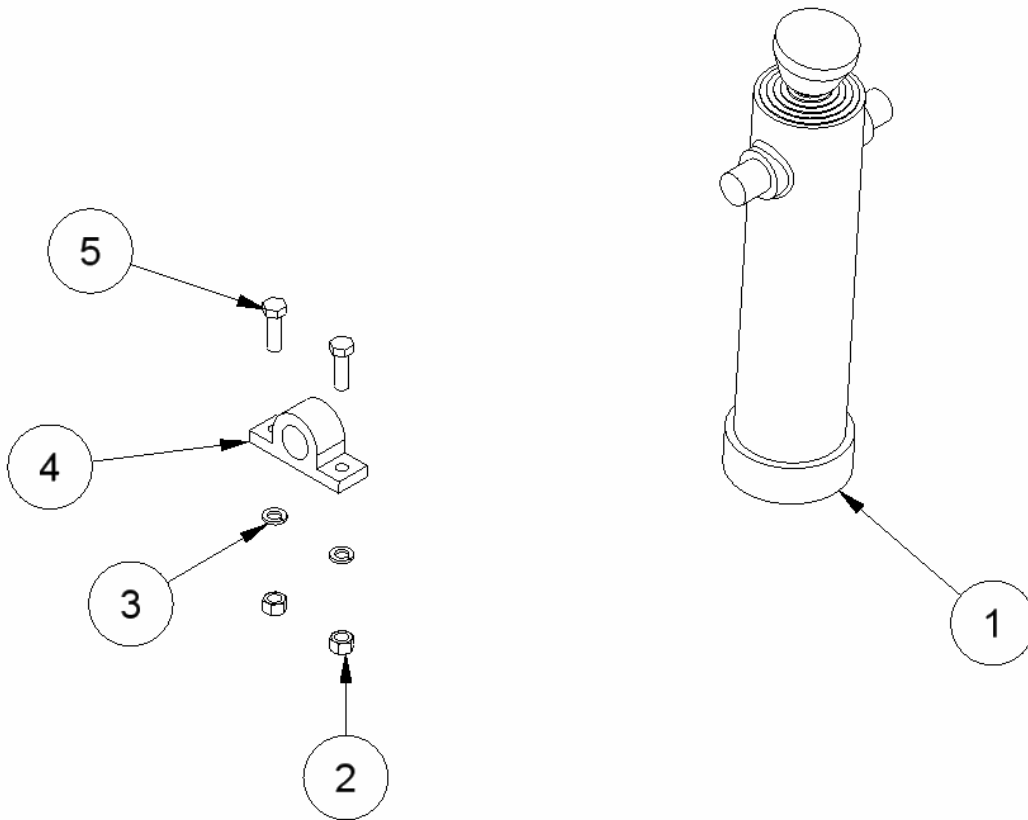
Item	Description	Part number	Image	Quantity used
1	Tailgate			1
2	Bolt	M10 x 80mm		2
3	Rear corner post-RHS	1304		1
4	Nut	M10		2
5	Rear corner post-LHS	1305		1
6	Nyloc	M16		2
7	Bolt	M16 x45mm		2
8	Flat washer	M16		6
9	Locking arm	P_128		2
10	Bolt	M20 x 40mm		2
11	Flat washer	M20		2

Rear Deck Hinge



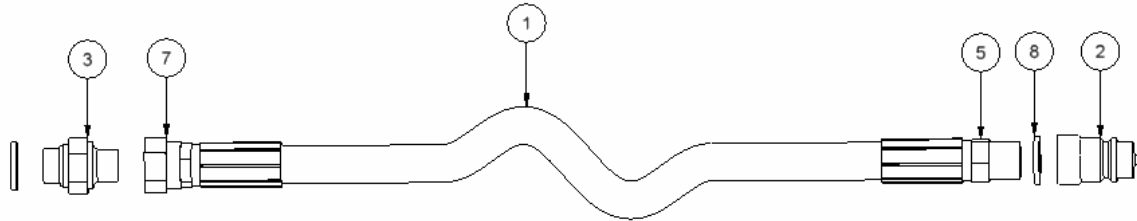
Model	Item		
	1	2	3
	Main Pin	Nyloc nut	Bolt
1.03			
1.04			
1.05			
1.06			
1.08	2183	M10	M10x65
1.10			
1.12			

Hydraulic Ram

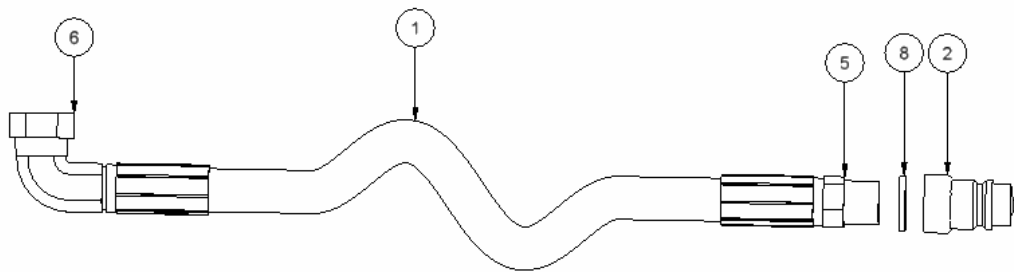


Model	Item				
	1	2	3	4	5
	Hydraulic ram	Nut	Spring washer	Cradle	Bolt
1.03					
1.04	24x3x1.5				
1.05	Ricarnie 093036			Ricarnie 35 TIPO 1	
1.06					
1.08	Ricarnie 093048	M16		Ricarnie 40 TIPO 1	M16
1.10	Ricarnie 093055			Ricarnie 45 TIPO 1	
1.12	Ricarnie 094051			Ricarnie 50 TIPO 1	








Hydraulic Hose Kit



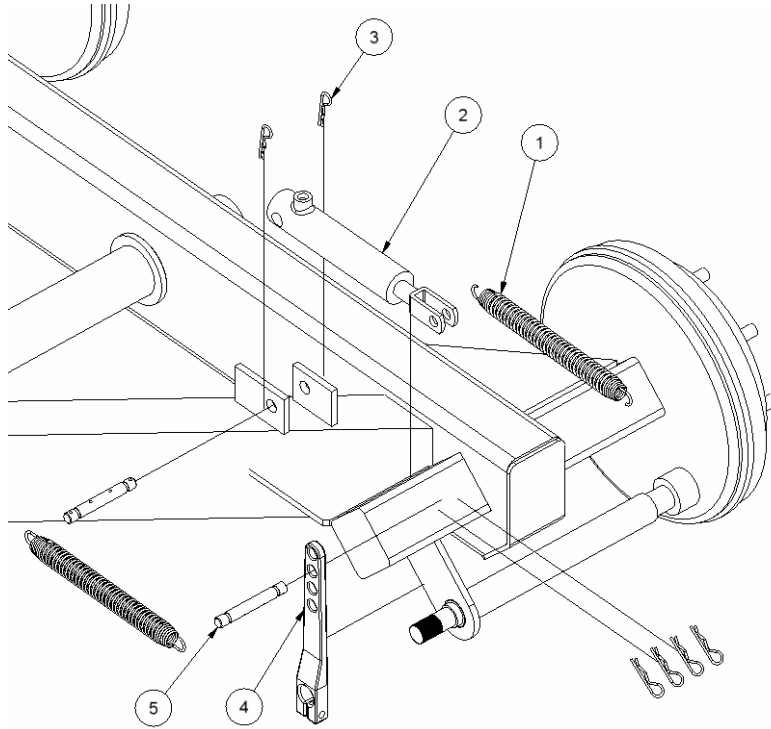
1.03-1.04








1.05-1.12

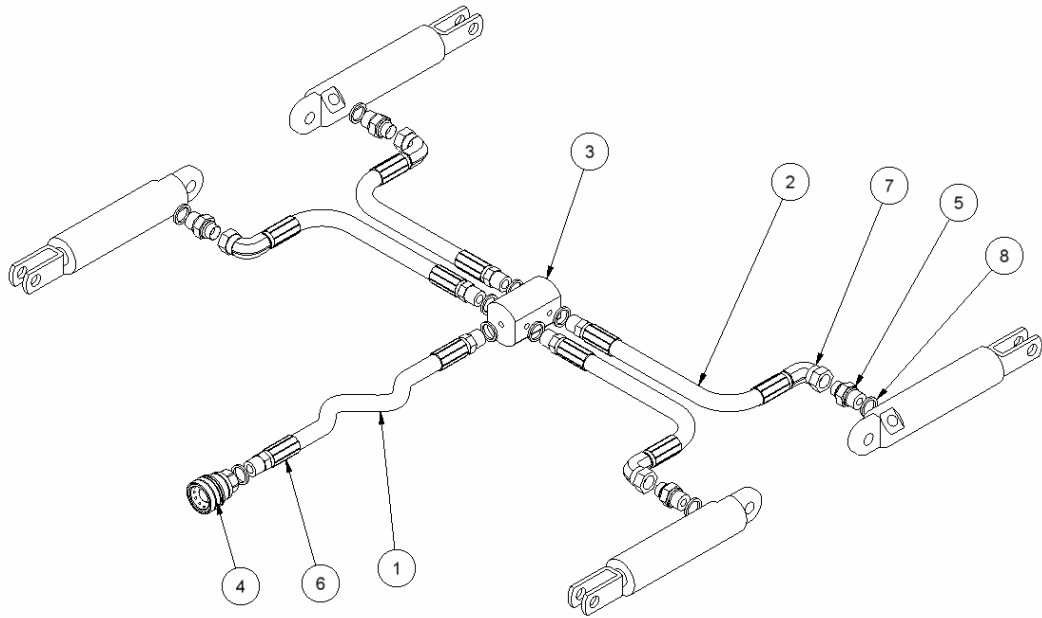
Model	Kit number	Item								
		1	2	3	4	5	6	7	8	
		Hose	Fittings			Hose ends		Seals		
		1/2" Double Wire Braid	1/2" BSPP Male QRC	1/2" BSPP Male -> 1/2" BSPP Male	1/2" Breather	1/2" BSPP Male	1/2" BSPP Compact 90° Female	1/2" BSPP Female	1/2" Doughty Seal	
										
1.03				1	1		0	1	3	
1.04	9962	4.65m	1			1				
1.05										
1.06	9935	5.0m								
1.08	9928	5.1m		0	0			1	0	1
1.10	9938	5.1m								
1.12	9941	7.6m								







Brake arm setup



Item	Description	Part number	Image	Quantity used
1	Return spring	00527		2
2	Brake ram	Ricarnie 01352		1
3	R-Clip	00553		6
4	Brake arm	Brake actuation arm		1
5	Pin	Brake lever 08_alt rod pin		2

Brake Hose Kit



Model	Kit number	Item							
		1	2	3	4	5	6	7	8
		Hose		Distributor block	Fittings		Hose ends		Seals
		$\frac{3}{8}$ " Single Wire Braid	$\frac{3}{8}$ " Single Wire Braid	5 Port Distributor Block	Tractor Brake Coupling VF38GASF-04G	$\frac{3}{8}$ " BSPP - -> $\frac{3}{8}$ " BSPP O-Ring	$\frac{3}{8}$ " BSPP Male	$\frac{3}{8}$ " BSPP Compact 90 Female	$\frac{3}{8}$ " Doughty Seal
									
1.08	9929	5.8m	4@ 0.8m	1	1	4	6	4	10
1.10	9939	6m	4@ 1m	1	1	4	6	4	10
1.12	9942	6m	4@ 1m	1	1	4	6	4	10

Troubleshooting

At Agmech we strive to deliver a solution to meet all your daily transport requirements. The following section has been prepared to help you get the best results from your machine. Do not hesitate to call us if you have a specific problem or alternatively if you have found a way to optimise this trailer, which other farmers may benefit from, let us know and there may be a tasty reward.

- Deck does not want to rise.
 1. Try increasing the tractor engine revs slightly.
 2. Swap the hydraulic hose to the other coupling on the rear of the tractor.
 3. Check the hydraulic oil supply from the tractor.
 4. Check the hoses and ram for oil leaks.

- Deck is slow to rise.
 1. Try increasing the tractor engine revs slightly.
 2. Swap the hydraulic hose to the other coupling on the rear of the tractor.
 3. Check the hoses and ram for oil leaks.

- Material sticks to deck.
 1. Make sure there are no large build ups of material between the deck and the sides, particularly towards the tailgate.
 2. Make sure you raise the deck fully when dumping.

- Material spills over sides.
 1. Check tailgate opens correctly.
 2. Leave the deck partially down until material begins to flow out the tailgate. Then raise the deck fully.



Terms and conditions of manufacture and supply

Ownership

Agmech Ltd at all times retains ownership in the goods supplied until payment is made for the goods and for any other goods supplied by Agmech Ltd; and if such goods are sold on their own account or as constituents of other goods by the customer prior to payment to Agmech Ltd then the proceeds of such sale shall be the property of Agmech Ltd.

The customer acknowledges that in the event that default is made in payment for any goods supplied for a period of one month, Agmech Ltd may repossess the goods in their original form or as constituents of other goods and sell the same exercising the full rights as owners of such goods. All losses, costs and expenses incurred in recovering and disposing of the goods is to the cost of and at the liability of the customer.

The customer agrees to indemnify Agmech Ltd for the cost of any litigation arising out of Agmech Ltd acting on any instructions for the customer.

Warranty

Agmech Ltd warrants, for a period of 12 months from the date delivery, its new product and parts to be free from defects in material and workmanship.

Agmech Ltd obligation over this warranty is limited to repair or replacement (at its factory or Agents factory) of any part or parts of the said products which shall be returned to Agmech Ltd with transportation charges prepaid and which Agmech Ltd examination shall disclose to its satisfaction to have been defective.

Agmech Ltd undertakes to remedy with reasonable dispatch, any original defects arising from defects in material or workmanship which under proper and normal conditions of use, are revealed within 12 months from date of delivery. In no case shall Agmech Ltd be liable for the cost of labour and travel incurred in replacing and fitting of the defective parts. Labour and installation charges and costs for work carried out under the terms of this warranty are for the customer's account.

Replacement parts provided under the terms of this warranty are covered for the remainder of the warranty period applicable to the product in which they are installed as if such parts were original components of that product.

For all warranty Agmech Ltd require you to contact them directly; no responsibility will be accepted for any defect, unless a written complaint is first received by Agmech Ltd and we have been given the first priority and ample opportunity to rectify the defect.

Agmech Ltd makes no other warranty, of any kind whatsoever, express or implied; AND ALL IMPLIED WARRANTIES OF MERCHANTABILITY AND FITNESS FOR A PARTICULAR PURPOSE WHICH EXCEED THE ABOVE MENTIONED OBLIGATIONS ARE HEREBY DISCLAIMED BY AGMECH LTD EXCLUDED FROM THIS AGREEMENT.

Agmech Ltd neither assumes nor authorises any person to assume for it, any other obligation in connection with the sale of Agmech's products. This warranty shall not apply to any product nor component thereof which has been repaired or altered outside of an approved factory in any manner so as (Agmech's sole judgment) to affect its serviceability or which has been subject to misuse, negligence, or accident; or to products made by Agmech Ltd which have been operated in a manner contrary to the printed instructions.

Under no circumstances shall Agmech Ltd be liable for loss, damage, cost or repair of consequential damages of any kind in connection with the sale, use and repair of any product purchased from Agmech Ltd.